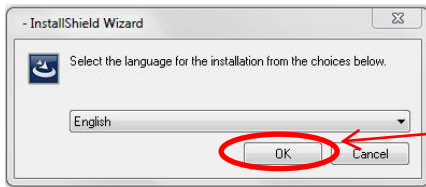


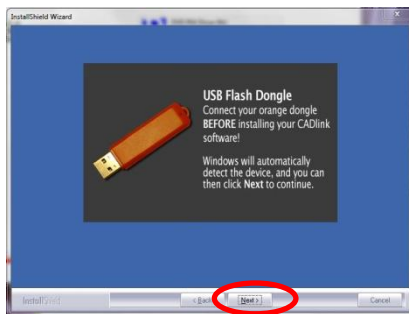
UT75 / Deluxe Software Driver Installation

1) Insert the Best Built Name Jewelry Designer software CD into your drive. If auto installation does not start, double click on the CD drive to start the installation.



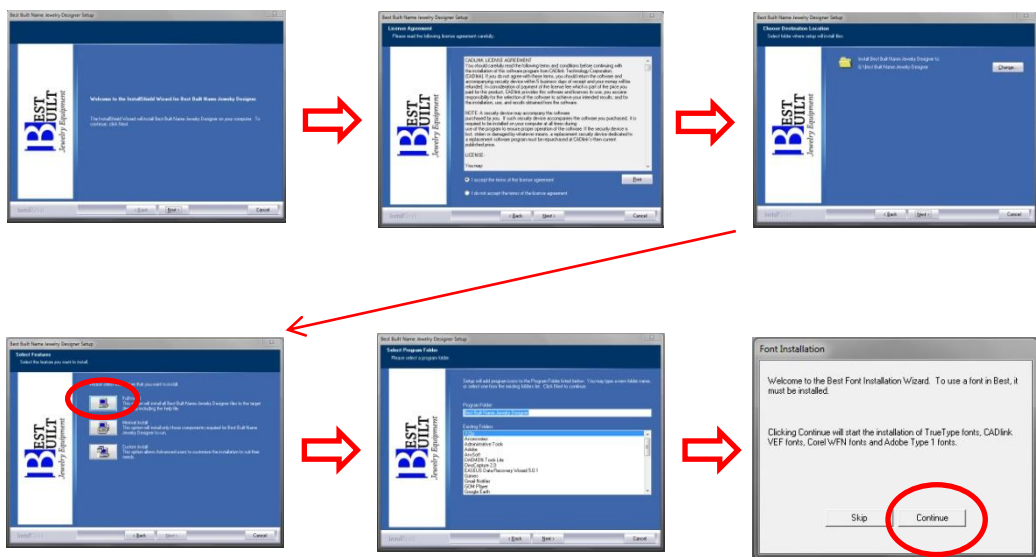
Click OK to start installation

2) When prompted, insert the USB DONGLE KEY and wait until the computer recognizes the new hardware. Then click NEXT to proceed.



Note: DO NOT SAVE DATA ON THIS KEY. IT IS NOT A USB FLASH DRIVE. SAVING DATA WILL CORRUPT THE LICENSE FILE AND SOFTWARE WILL NOT WORK.

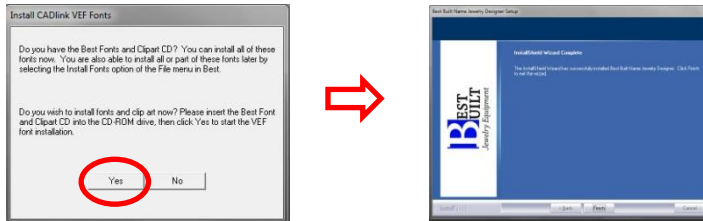
3) Proceed with the installation



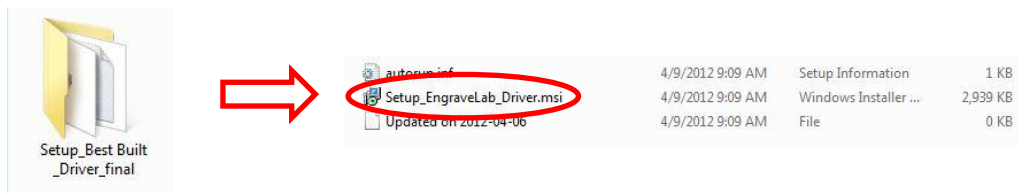
FULL INSTALL

UT75 / Deluxe Software Driver Installation

4) When prompted, insert the Font/Clipart CD.



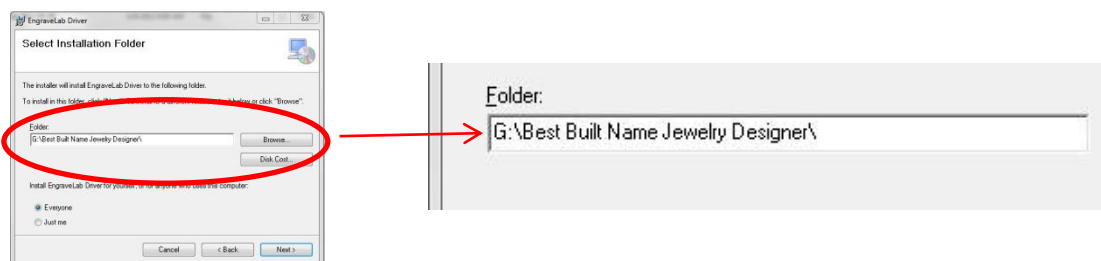
5) Insert the UT75 Driver CD. Double click and open the folder (Setup Best Built Driver Final) Double click on the SETUP Engrave lab Driver to install the update.



6) Click on the NEXT button to proceed.

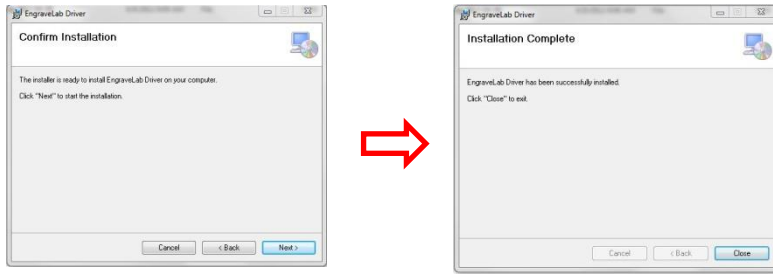


7) Make sure the driver is being installed correctly in the folder of the Best Built Name Jewelry Designer

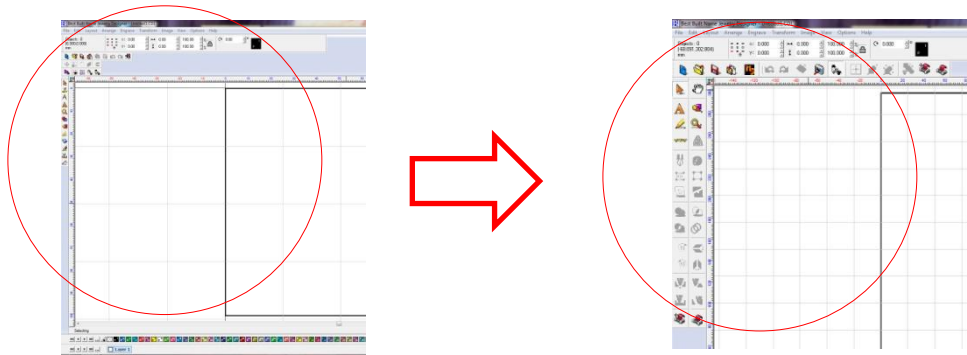


UT75 / Deluxe Software Driver Installation

8) Proceed with installation and click close then installation is complete.



9) Verify the driver is installed correctly. First open up the Name Jewelry Design program .



Driver not loaded correctly, will show single line of tools. Just close the program and restart.

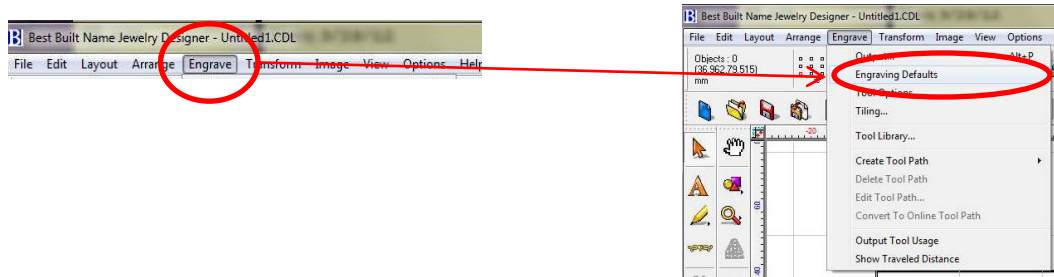
Driver loaded correctly, will display as shown above.

10) Click the tool (MS) to change the work area size. Select the default size and click OK.

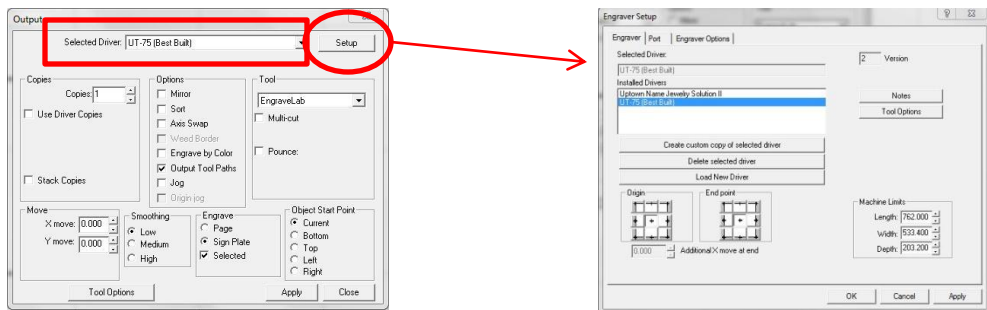


UT75 / Deluxe Software Driver Installation

11) Click ENGRAVE from the top menu bar and select Engraving Defaults.



12) From the option (Select Driver) make sure it indicates UT-75. If not, click setup and look for the driver and click load driver.



13) Once the driver is loaded, the installation is done.